

METHODIST HOSPITAL

"Serving Humanity to Honor God"

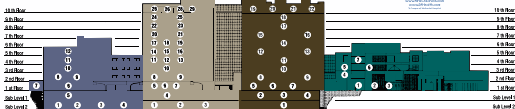
www.SAHealth.com

Campus Map

NORTH TOWER

CENTRAL TOWER

SOUTH TOWER



- 1. Surgery
- 2. Radiology
- 3. Magnetic Resonance Imaging (MRI)
- 4. Adult G.I. Lab
- 5. Pharmacy
- 6. Antepartum
- 7. Neonatal Intensive Care
- 8. Mother / Baby
- 9. Nursery
- 10. Orthopedic / Surgical Admissions
- 11. Women's Specialty
- 12. General / Special Surgical

- 1. Surgery
- 2. Radiology
- 3. Surgery Waiting
- 4. Cafeteria
- 5. Labor & Delivery
- 6. Casperson Section Suite
- 7. Walk-In Clinic
- 8. Ophthalmology
- 9. Mother / Baby
- 10. Orthopedic / Surgical Admissions
- 11. Apheresis
- 12. Intermediate Medical Care
- 13. Medical Intensive Care
- 14. Neuro Diagnostic Lab / EEG
- 15. Cardiology - EKG/ Ultrasound/ Nuclear
- 16. Cardiac Observation
- 17. Intermediate Cardiac Care Central
- 18. Cath. Lab Holding
- 19. Special Amenities Suites
- 20. Medical / Surgical Intermediate Care
- 21. Medical / Surgical Intensive Care
- 22. Medicine II
- 23. Bone Marrow Transplant
- 24. Clinical Admitting
- 25. Neuro Medical Care
- 26. Outpatient Clinic
- 27. Dialysis
- 28. Apheresis
- 29. Beauty Shop

- 1. Surgery
- 2. Lab
- 3. Lost & Found
- 4. Housekeeping
- 5. Gift Shop
- 6. Adult E.R.
- 7. Admitting
- 8. Children's Holding / Surgery
- 9. Children's PCU
- 10. Children's Intermediate Care
- 11. Children's Medical Care
- 12. Cardiology Admitting
- 13. CVOR / Cardiac Cath Lab
- 14. Intermediate Cardiac Care South
- 15. Cardiac Intensive Care
- 16. Surgical Intensive Care
- 17. Oncology
- 18. Neurosciences
- 19. Special Amenities Suites
- 20. Neurology Critical Care
- 21. Neurology Intermediate Care
- 22. Chapel

- 1. Children's Admitting
- 2. Info Express
- 3. Children's E.R.
- 4. Children's Surgical Waiting Area
- 5. Children's Surgical Care
- 6. Family Prayer Room
- 7. Children's HEM/Onc Transplant



THE METHODIST HEART HOSPITAL IS LOCATED ON FLOORS 1, 2, 3, 4, 5, 6, 7, 8, 9, 10, 11, 12, 13, 14, 15, 16, 17, 18, 19, 20, 21, 22, 23, 24, 25, 26, 27, 28, 29 OF THE CENTRAL AND SOUTH TOWERS



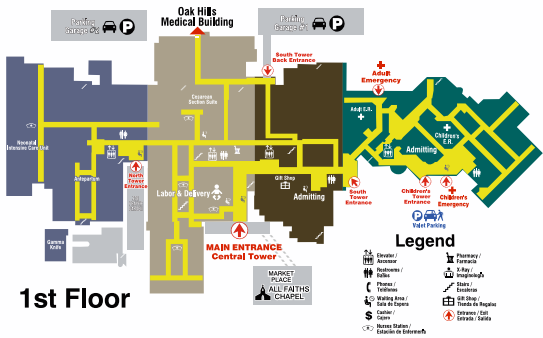
ALL FAITHS CHAPEL
Across From Central Tower Entrance

Cafeteria
located on sub-level 1
central tower

METHODIST HOSPITAL

"Serving Humanity to Honor God"

www.SAHealth.com



1st Floor

- Legend**
- Elevator / Ascensor
 - Pharmacy / Farmacia
 - Waiting Area / Sala de Espera
 - Phones / Telefonos
 - Cafeteria / Capes
 - Horse Station / Estacion de Entrenamiento
 - Pharmacy / Farmacia
 - Imaging / Imagenologia
 - Stairs / Escaleras
 - Gift Shop / Tienda de Regalos
 - Entrance / Exit / Entrada / Salida